



MONTHLY MEMBERSHIP PROGRESS REPORT

District 3231A3

Results as of: 02/28/2019

GMT: JAYESH THAKKAR

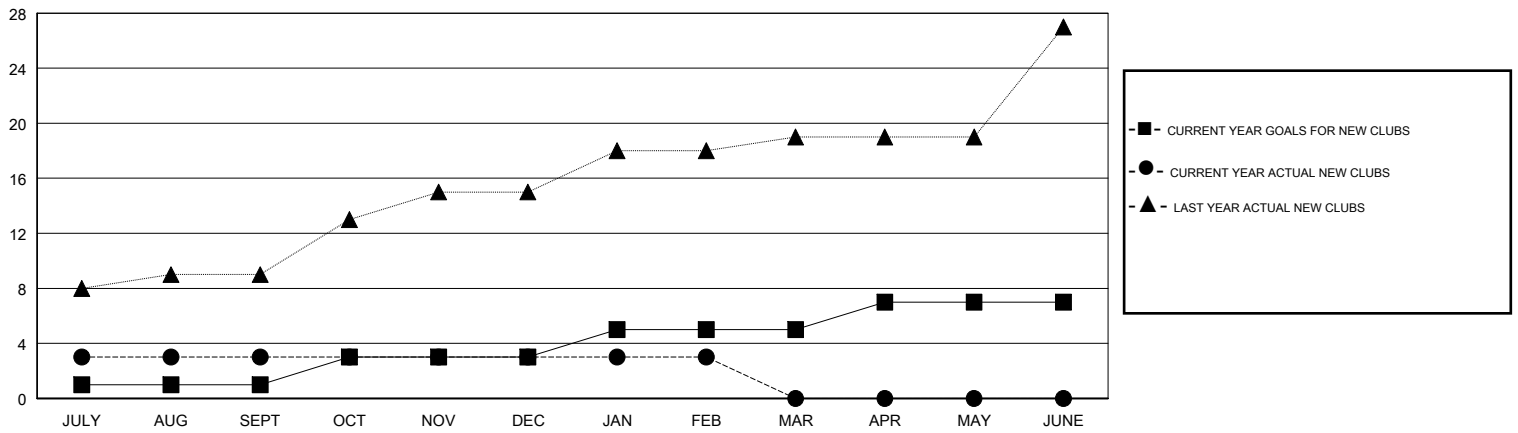
LOCATION INDIA

GMT CA

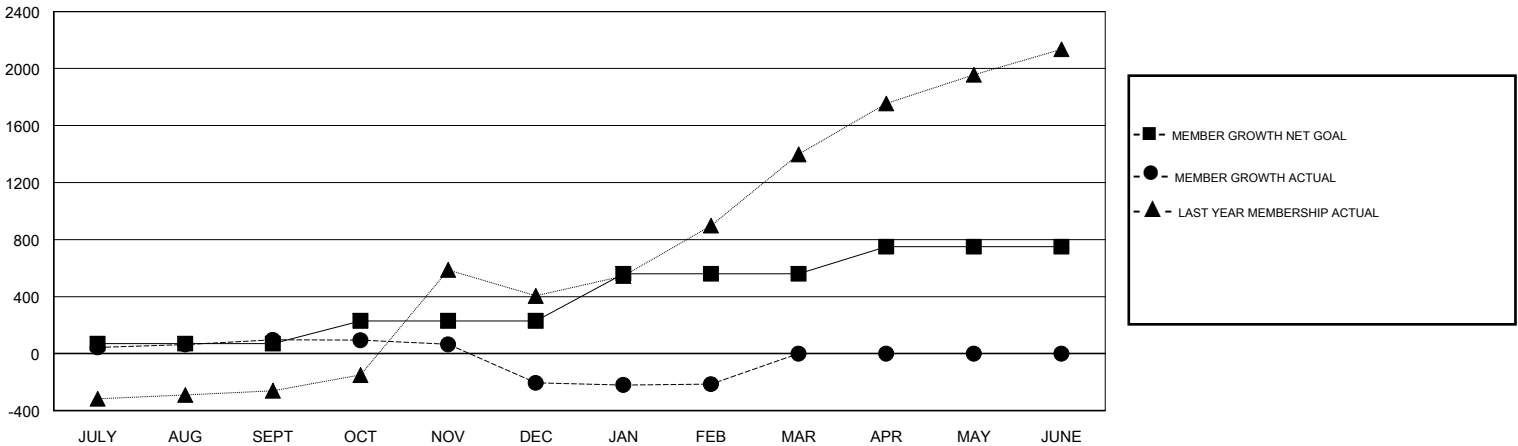
Clubs			
RESULTS FOR 2018-2019			
QUARTER	NEW CLUB GOAL	NEW CLUBS	DROPPED CLUBS
JULY/AUG/SEPT	1	3	0
OCT/NOV/DEC	2	0	0
JAN/FEB/MAR	2	0	1
APR/MAY/JUNE	2	0	0

Members			
RESULTS FOR 2018-2019			
QUARTER	MEMBER GROWTH NET GOAL	MEMBER GROWTH ACTUAL	DROPPED MEMBERS ACTUAL (including transfers)
JULY/AUG/SEPT	70	240	125
OCT/NOV/DEC	160	90	374
JAN/FEB/MAR	330	41	35
APR/MAY/JUNE	190	0	0

GOALS AND ACTUAL NEW CLUBS CUMULATIVE



GOALS AND ACTUAL MEMBERS CUMULATIVE



DROPPED CLUBS: 1	54 CLUBS OF 131 ADDED 1 OR MORE NEW MEMBERS	<u>GENDER DISTRIBUTION</u>	
DROPPED MEMBERS		MALE	5,304 (62.59%)
DECEASED	13	FEMALE	3,170 (37.41%)
CLUB CANCELLED	0	Women Percentage Fiscal Year Goal: 40%	
OTHER	521	TOTAL FAMILY UNIT MEMBERS	6,327
TOTAL	534	FAMILY MEMBERS PAYING HALF DUES	4,014

[CLICK HERE FOR CUMULATIVE MEMBERSHIP DATA](#)